

41701 Recombinant Human Peptidase M20 Domain-containing Protein 1 (mPM20D1)

Source:	Expressed in Human Embryonic Kidney 293 Cells
Tag:	C-terminal 6xHis
Size:	100µg
Purity:	>95%, determined by SDS-PAGE
Endotoxin Level:	<0.2EU/µg, determined by LAL Test
Other Names:	Cps1, FLJ32569

Introduction to the Molecule

Peptidase M20 domain containing 1 (PM20D1), also known as a bidirectional N-fatty-acyl amino acid synthase/hydrolase that regulates the production of N-fatty-acyl amino acids. In brown and beige adipocytes, these metabolites may act as endogenous chemical uncouplers of mitochondrial respiration in an uncoupling protein 1-independent manner, possibly through interaction with mitochondrial transporters.

Amino Acid Sequence

MGPRSGEHQRASRIPSQFSKEERVAMKEALKGAIQ
IPTVTFSSSEKSNTTALAEFGKYIHKVFPTVVSTFSIQ
HEVVEEYSHLFTIQGSDPSLQPYLLMAHFDVVPAPPE
EGWEVPPFSGLERDGIYGRGTLDDKNSVMALLQA
LELLLIRKYIPRRSFFISLGHDEESSGTGAQRISALL
QSRGVQLAFIVDEGGFILDFFIPNFKKPIALIAVSEK
GSMNMLQVNMTSGHSSAPPKETSIGILAAAVSRL
EQTPMPIIFGSGTVVTVLQQLANEFPPVNIILSNPW
LFEPLISRFRMERNPLTNAIIRTTTALTIFKAGVKFNVI
PPVAQATVNFRIHPGQTVQEVLELTKNIVADNRVQF
HVLSAFDPLPVSPSDDKALGYQLLRQTVQSVFPEVN
ITAPVTSIGNTDSRFFTNLTGTYRFYPIYIQPEDFKR
IHGVNEKISVQAYETQVKFIFELIQNADTDQEPVSH
LHKL**ENLYFQGH**HHHHH

Note: **TEV site** and **6xhis tag** are highlighted

Formulation, Reconstitution and Storage

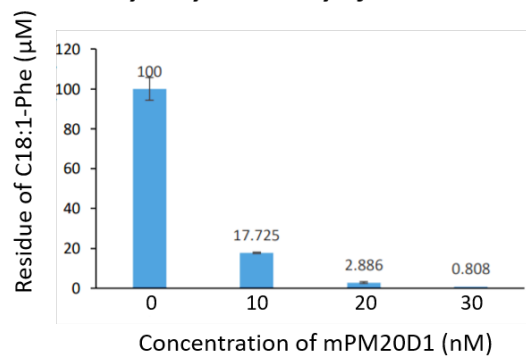
- Lyophilized at 1 mg/mL in NaCl 137mM, KCl 2.7mM, Na₂HPO₄ 10mM, KH₂PO₄ 1.8mM, pH 8.0.
- Add deionized water to prepare a working stock solution of approximately

1 mg/mL and let the lyophilized pellet dissolve completely.

- Store lyophilized protein at -20°C. Aliquot reconstituted protein and store at -80°C. Avoid repeated freezing /thawing cycles.

Bioactivity Test

Hydrolytic Activity of mPM20D1



SDS-PAGE Gel

